**EARLY INTERVENTION IN THE REAL WORLD**

Early psychosis detection program in Chile: A first step for the South American challenge in psychosis research

Pablo A. Gaspar^{1,2,3} | Rolando I. Castillo¹ | Alejandro Maturana¹ | María J. Villar¹ | Karen Ulloa¹ | Gabriel González¹ | Osvaldo Ibaceta¹ | Andrea Ortiz¹ | Sebastián Corral¹ | Rocío Mayol¹ | Valeria De Angel¹ | María B. Aburto¹ | Antígona Martínez^{4,5} | Cheryl M. Corcoran^{6,7} | Hernán Silva^{1,3}

¹Department of North Psychiatry, Faculty of Medicine, University of Chile, Santiago, Chile

²Millennium Nucleus to Improve the Mental Health of Adolescents and Youths, Imhay

³Biomedical Neuroscience Institute, Santiago, Chile

⁴Division of Experimental Therapeutics, Department of Psychiatry, Columbia University, New York, New York

⁵Schizophrenia Research Division, Nathan Kline Institute for Psychiatric Research, Orangeburg, New York

⁶New York State Psychiatric Institute, New York, New York

⁷Icahn School of Medicine at Mount Sinai, New York, New York

Correspondence

Pablo A. Gaspar, Clínica Psiquiátrica Universitaria de la Universidad de Chile, Sector H, Avenida La Paz, 1003, Recoleta, Santiago, RM 8431685, Chile.
Email: pagaspar@uchile.cl

Funding information

FONDECYT initiation into research 2014, Grant/Award Number: 11140464; National Commission for Scientific and Technological Research (CONICYT) - PCHA, Doctorado Nacional, Grant/Award Number: 2015-21150063; NIH Research Project Grant Program, Grant/Award Number: RO1 MH107558 02

Aim: Early detection and intervention (EDI) is a main challenge in psychosis research. The Chilean schizophrenia (SZ) national program has universal support and treatment by law for all SZ patients, but this does not yet extend to earlier stages of illness. Therefore, we have piloted an ultra-high risk (UHR) program to demonstrate the utility and feasibility of this public health approach in Chile.

Methods: We introduce “The University of Chile High-risk Intervention Program,” which is the first national EDI program for UHR youths. Longitudinal follow-up included clinical and cognitive assessments, and monitoring of physiological sensory and cognitive indices, through electroencephalographic techniques.

Results: We recruited 27 UHR youths over 2 years. About 92.6% met criteria for attenuated psychosis syndrome (APS). Mean Scale of Psychosis-Risk Symptoms (SOPS) ratings in the cohort were 6.9 (SD 4.6) for positive, 9.1 (SD 8.3) for negative, 5.4 (SD 5.3) for disorganized and 6.3 (SD 4.1) for general symptoms. About 14.8% met criteria for comorbid anxiety disorders and 44.4% for mood disorders. Most participants received cognitive behavioural therapy (62.9%) and were prescribed low dose antipsychotics (85.2%). The transition rate to psychosis was 22% within 2 years.

Conclusions: We describe our experience in establishing the first EDI program for UHR subjects in Chile. Our cohort is similar in profile and risk to those identified in higher-income countries. We will extend our work to further optimize psychosocial and preventive interventions, to promote its inclusion in the Chilean SZ national program and to establish a South American collaboration network for SZ research.

KEYWORDS

Chile, mental health services, preventive psychiatry, psychosis, South America, ultra-high risk

1 | INTRODUCTION

Psychotic disorders typically emerge during adolescence and early adulthood, leading to functional impairment and significant burden for caretakers and society. In the absence of early detection and prevention, young people with psychotic disorders often obtain care in emergency services in the context of crisis (Corcoran et al., 2007). In the

past two decades, therefore, there has been a concerted effort through early detection programs (EDPs) to identify young people with psychotic-like symptoms, with the intention of preventing or delaying psychosis onset, and reducing functional impairment. Interestingly, when compared to inpatient programs, EDPs have shown to be cost-effective in improving the prognosis of schizophrenia (SZ) spectrum disorders (McCrone, 2010; McGorry, 2015). In this

context, a growing number of EDPs for psychosis have been developed in Australia, Europe, North America and more recently in Asia.

Initially, EDPs were focused on shortening the duration of untreated psychosis associated with the first episode of psychosis (FEP). The main focus now is on the putative prodromal period, also known as a clinical high-risk (CHR) or ultra-high risk (UHR) syndrome, that is characterized by attenuated psychotic-like experiences, social isolation and withdrawal, mood symptoms and a decline in social and academic/vocational function (Carpenter, 2016; Yung & McGorry, 1996). An initial meta-analysis suggests that some interventions may reduce rates of onset of psychosis in CHR/UHR participants, though without clear improvement in function (Schmidt et al., 2015). Hence, more work is needed to improve predictive validity for both psychosis and functional impairment, through the identification of biomarkers that in turn can be targets of engagement for developing preventive intervention strategies.

Recently, Latin America has joined this psychosis EDP initiative with a handful of EDP programs, mainly in urban areas in Brazil and Mexico, affiliated with universities for research purposes, though with partnerships with public education and other community-based efforts (Brietzke, Araripe Neto, Dias, Mansur, & Bressan, 2011). Ours is the first EDP program in Chile, capitalizing on academic affiliations with the University of Chile and the Biomedical Neuroscience Institute in Santiago, yet also contextualized within a larger nationwide public health initiative that addresses SZ. Chile is relatively unique worldwide in that a decade ago; it implemented a legal mandate that guaranteed diagnosis and treatment for medical diagnoses that influenced public health, including SZ. In Chile, the Garantías Explicitas en Salud (GES) program, backed by State Law 19.937, has provided universal free access for diagnosis and treatment of SZ (MINSAL, 2009) including "suspected cases" among FEP patients, leading to lower rates of re-hospitalization and better outcomes for patients and families. With respect to services, adherence to medication guidelines has been high at 86%, with about half of patients and families obtaining psychoeducation (Markkula, Alvarado, & Minoletti, 2011). As of now, however, GES for SZ starts with the FEP, leaving UHR patients without health coverage. Research on the UHR state in Chile is therefore critical for determining potential future GES guidelines for early identification and intervention for psychosis risk. Here, we describe the first UHR program in Santiago, Chile, including clinical characterization and therapeutics, and opportunities for research and training, so that this approach can be implemented more broadly throughout Chile and South America.

2 | METHODS

2.1 | The UCHIP clinical program: setting, staffing, ascertainment, clinical characterization prospective evaluation and therapeutics

2.1.1 | Setting

The University of Chile High-risk Intervention Program (UCHIP) is located at the Psychiatric Clinic of the University of Chile Hospital (PCUCH), which is the oldest and among the most prominent training

psychiatric centres in the country. Most referrals come from the northern part of Santiago, but as PCUCH is a nationwide referral centre, it provides services to UHR and FEP patients from all over the country. The UCHIP was founded in May of 2014 and its aim and mission is to provide quality, evidence-based and long-term clinical care to teens and young adults who meet criteria for UHR or FEP.

2.1.2 | Staff

The UCHIP team is comprised of three psychiatrists (one adult and two child and adolescent psychiatrists), one clinical coordinator, one neuropsychologist, three PhD students (two in biomedical sciences and one in psychiatry), three residents in child and adolescent psychiatry and two medicine interns (under rotation).

2.1.3 | Participant ascertainment

Participants are ascertained from crisis evaluation in the emergency services as well as through outpatient consultation in both the child and adolescent, and adult, psychiatry units. Prior to the founding of UCHIP in 2014, these patients would have had non-expert clinical consultations without the provision of systematic intervention. Inclusion criteria for our participants include; (a) ages 12 to 35 years old and (b) fulfil criteria for at least one of three prodromal syndrome scales: (a) Attenuated Psychotic Symptoms (APS), (b) Brief and Limited Intermittent Psychotic Symptoms (BLIPS) or (c) Genetic Risk and Deterioration (GRD; first-degree family history of psychosis or schizotypal personality disorder with significant functional decline) (Miller et al., 1999). Exclusion criteria include (a) previous threshold psychosis (presence of psychosis criteria), (b) severe abuse or dependence of alcohol or other drugs, (c) intellectual disability, (d) autism spectrum or (e) neurological disorders (Figure 1).

2.1.4 | Clinical characterization

Screening and diagnosis followed the guidelines established at Yale University's Prevention through Risk Identification, Management and Education (PRIME) program. The Structured Interview for Psychosis-Risk Syndromes/Scale of Psychosis-Risk Symptoms (SIPS/SOPS) (Miller et al., 1999) was administered by psychiatrists at UCHIP trained to reliability, with function assessed using the Global Assessment of Functioning (Hall, 1995). The Mini International Neuropsychiatric Interview for adults (MINI) and adolescents (MINI-KID) (Sheehan et al., 2010) was also administered to diagnose other comorbidities (Figure 1). The exclusion diagnoses (autism spectrum disorders, severe substance abuse disorder and intellectual disability) were performed according to the diagnostic guidelines of the DSM-5.

2.1.5 | Prospective evaluation

The UCHIP program does weekly ratings and clinical monitoring at least monthly, and more often for acuity. There is also a group evaluation twice a year. Medical, psychiatric and environmental risk assessments are also completed using a semi-structured interview, with a focus on identifying sources of personal and family stress. Also, there is monitoring of features of potential metabolic syndrome, including body mass index, vital signs, fasting glucose, lipid profile, hepatic profile and thyroid-stimulating hormone, at baseline and then at least

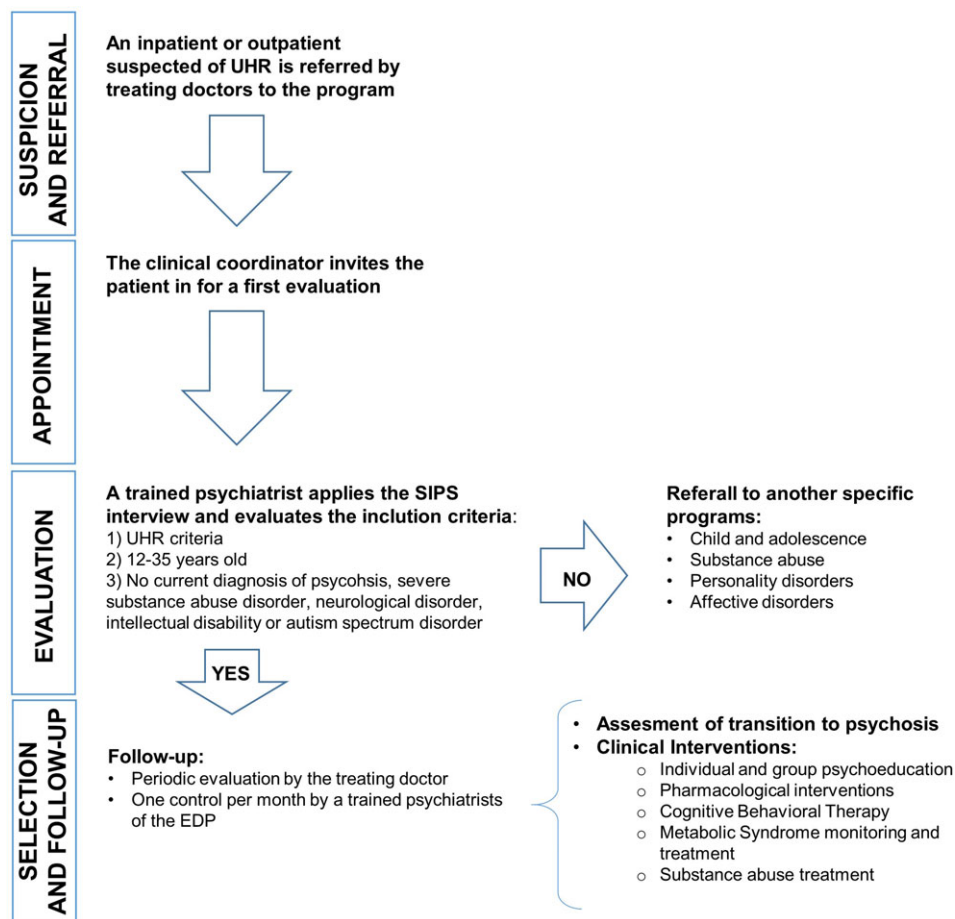


FIGURE 1 University of Chile High-risk Intervention Program patient flowchart (EDP, early detection program; UHR, ultra-high risk)

every 6 months, with greater frequency of assessment as needed (Figure 1). If there is a personal or family history of heart disease, an electrocardiogram is requested to rule out this pathology, considering the high possibility of using antipsychotics in the longitudinal follow-up. Electroencephalography (EEG), neuroimaging (computed tomography scan or magnetic resonance imaging), urine toxicology and testing for sexually transmitted diseases (HIV and syphilis) are also assessed if clinically indicated to make differential diagnosis with other relevant conditions.

2.1.6 | Therapeutics

Antipsychotic medication is prescribed only for selected cases with moderate to severe symptoms, following GES-SZ guidelines (MINSAL, 2009), beginning with a second-generation antipsychotic (SGA) medication dosed at lower levels of the recommended dose range and chosen based on clinical profile and potential side-effects. Antipsychotic dose is increased after 3 weeks if there is minimal to moderate response and medication is switched to another SGA if there is inadequate clinical response. Antidepressants, anxiolytics and mood stabilizers are used as needed to target other non-psychotic symptoms. Mild to moderate substance abuse is treated using psychoeducation and standard motivational interviewing techniques, with cognitive behavioural therapy used to sustain abstinence. The development of more severe abuse or dependence prompts referral to specialty programs for abuse and dependence (Figure 1).

All participants, and their family members, are offered a standardized psychoeducational group intervention at baseline and every 6 months, following the protocol from the Programa de Intervención en Psicosis Adolescente (PIENSA) program from Spain (Ruiz-Sancho et al., 2012). Likewise, all participants are offered cognitive behavioural therapy, individualized for each participant, but generally comprising of development of social skills, problem solving abilities, emotional regulation techniques, management of cognitive distortions and behavioural modification.

2.2 | Training and research at the UCHIP clinical program

UCHIP emphasizes academic activities such as research and training, as it is within the clinical branch of the Translational Psychiatry Laboratory at the University of Chile in Santiago. The Translational Psychiatry Laboratory emphasizes the application of clinical neuroscience to the study of neuropsychiatric disorders, including SZ and its risk states, as well as bipolar, personality, attention-deficit/hyperactivity and autism spectrum disorders.

2.2.1 | Training

UCHIP is a place of training for national and international undergraduate and graduate students. Likewise, the UCHIP staff actively participates in the academic activities of the University of Chile.

2.2.2 | Research

We have focused on the study of putative biomarkers of psychosis risk and functional outcome at UCHIP, in particular, cognitive and sensory processing in the visual and auditory domains assessed both behaviourally and at the physiological level using event-related potentials (ERP) and event-related spectral decomposition (ERSD) measures, as well as genetic markers. Cognition is assessed using the Montreal Cognitive Assessment (MoCA; Nasreddine, Phillips, Bédirian, Charbonneau, & Whitehead, 2005) and a Spanish version of the MATRICS Consensus Cognitive Assessment Battery (MCCB; Nuechterlein et al., 2008). For neurophysiological studies, the ongoing (resting-state) EEG is measured as well as ERPs elicited during working memory and perception tasks (visual, auditory and bimodal). In all cases, electrophysiological recordings are carried out with a 72-channel Biosemi EEG system. Resting-state and task-related electrophysiological measures are evaluated in parallel to assess underlying circuitry and functional connectivity patterns. Finally, serum for genotyping is collected from both participants and first-degree relatives. For comparison, all of the above measures are also acquired in healthy volunteers, and patients with FEP or SZ, in order to evaluate stage-specific deficits in UHR individuals.

2.3 | Statistical analyses

Following are descriptive statistics and group comparisons, using non-parametric tests, for the participants ascertained to date, with respect to demographics, clinical characteristics and therapeutics. We determined the predictive value of clinical severity for psychosis outcome. We also conducted proportional hazards survival analysis, generating Kaplan-Meier survival curves, both overall and by gender, to show the pattern of psychosis onset over time within the UHR cohort, and Cox regression analysis to determine age effects on rates of transition to psychosis.

3 | RESULTS

3.1 | Demographics

We recruited 27 UHR (19 male), ages 12 to 28 (mean 17.6 years), with years of education ranging from 5 to 16 (mean 9.8 years). All participants were single and only one was employed. All but one participant lived in the Santiago Metropolitan area. Mean number of days of follow-up was 349 days (Table 1).

TABLE 1 Baseline demographics of ultra-high risk subjects

	Mean (SD)	Median (range)
Age (years)	17.6 (2.9)	17 (12-28)
Education (years)	9.8 (3.9)	10 (5-16)
	n	%
Gender (male)	19	70.3
Marital status (single never married)	27	100
Residence (Santiago)	26	96.3

3.2 | Clinical characteristics

Of the 27 participants, 25 met criteria for APS at baseline, with only 2 participants meeting criteria for GRD. There were no baseline BLIPS diagnoses in our cohort. Mean SOPS ratings in the cohort were 6.9 (SD 4.6) for positive, 9.1 (SD 8.3) for negative, 5.4 (SD 5.3) for disorganized and 6.3 (SD 4.1) for general symptoms. On the other hand, most of the cohort (74.1%) scored mild symptoms. The prevalence of anxiety and mood disorders, determined by the MINI interview, was respectively, 14.8% and 44.4% (Table 2).

3.3 | Therapeutics

Compliance with treatment was relatively high, with all participants receiving psychoeducation, 62.9% receiving CBT and 85.2% prescribed daily low-dose SGA (Aripiprazole 5-10 mg, Risperidone 1-2 mg, Quetiapine 25-150 mg, Olanzapine 5 mg). Five percent of participants were prescribed anxiolytics, 12% antidepressant medication (eg, Sertraline 25-100 mg, Escitalopram 10-20 mg), although 22% were prescribed omega-3 polyunsaturated fatty acids (PUFA) (Table 2).

3.4 | Psychosis outcome

Twenty-two percent of the UHR cohort met criteria for threshold psychosis and 18% for personality disorder within 2 years. Survival analysis showed a mean (SD) time to transition of 348.9 (162) days and a median (CI) time of transition of 331 (53-710) days. Specifically, transition occurred at day 295 for two individuals, with the other transitions occurring respectively on days 364, 400, 504 and 598 (Figure 2). There was a trend effect for mean survival by gender with males

TABLE 2 Baseline clinical characteristics of UHR subjects

	n	%	Mean (SD)
UHR subtype			
APS	25	92.6	-
GRD	2	7.4	-
BLIPS	0	0	-
SOPS clinical scores			
Total positive	-	-	6.9 (4.6)
Total negative	-	-	9.1 (8.3)
Total disorganized	-	-	5.4 (5.3)
Total general	-	-	6.3 (4.1)
Comorbidity			
Anxiety disorders	4	14.8	-
Mood disorders	12	44.4	-
Medication use			
Antipsychotics	23	85.2	-
Antidepressants	12	44.4	-
Anxiolytics	5	18.5	-
PUFA	6	22.2	-
Psychotherapy	17	62.9	-

Abbreviations: APS, attenuated psychosis syndrome; BLIPS, Brief and Limited Intermittent Psychotic Symptoms; GRD, genetic risk and deterioration; PUFA, polyunsaturated fatty acids; SOPS, Scale of Psychosis-Risk Symptoms; UHR, ultra-high risk.

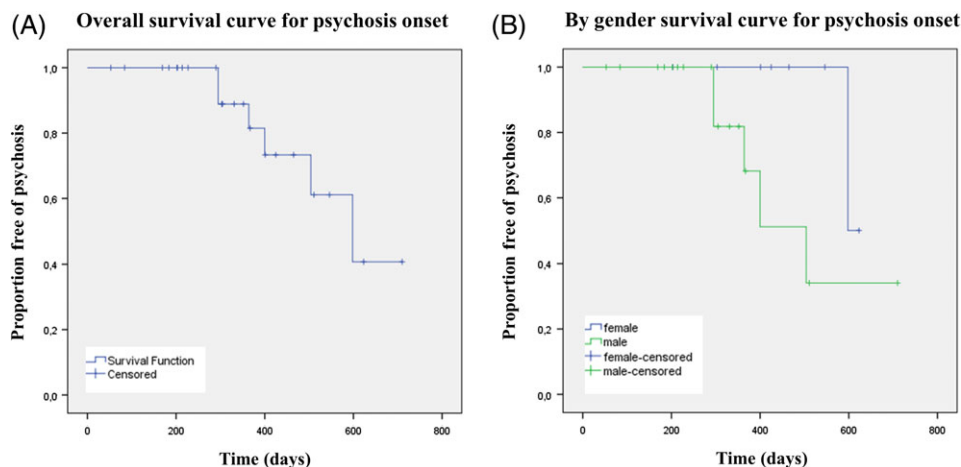


FIGURE 2 Survival to psychosis onset—overall and by gender

transitioning to psychosis more quickly: 499 days (95% CI 380–618 days) for males vs 611 days (95% CI 593–627 days) for females (Log rank test $P = 0.09$). Age was unrelated to survival in this small cohort ($\beta = 0.859$; 95% CI: 0.6–1.2). For the dichotomous analysis of transition, all the SIPS categories (positive, negative, general and disorganized symptoms) showed small effect sizes (0.2 or less), which suggests that baseline symptoms severity did not predict transition significantly (Table 3).

4 | DISCUSSION

Individuals suffering from neuropsychiatric disorders in low- and middle-income countries (LAMIC countries) frequently do not receive adequate evidence-based care, leading to chronicity, poor prognosis and increased costs of care. Early prevention and promotion of mental health in psychosis have become a priority in Asia, Latin America and Europe (McGorry, 2015). Increasingly, LAMIC countries in Latin America have successfully implemented EDPs (Brietzke et al., 2011). In this context, we have described our experience in establishing the first EDP for 27 UHR subjects in Chile.

When we compared our sample with the largest UHR cohort in the Western Hemisphere, the North American Prodrome Longitudinal Study (NAPLS-2, $n = 764$), we found that our cohort was younger (17.6, $SD = 2.9$ vs 19.7, $SD = 4.7$) and with fewer years of education (9.8, $SD = 3.9$ vs 12.7, $SD = 3.6$). It also had a higher proportion of

males (70.3% vs 50.4%), but with similar marital status (100% vs 95% single/never married). The proportion of psychosis-risk syndromes was also similar with 92.6% vs 92.1% APS in the NAPLS-2. (Addington et al., 2015). Prevalence of other clinical diagnoses in UHR was similar for mood disorders (44.4% vs 49.2%) but not for anxiety disorders, which was lower in our sample (14.8% vs 47.8%; Addington et al., 2017). Regarding treatment, we were more prone to use a SGA (85.2% vs 12.3%) than psychotherapy (62.9% vs 73.7%) (Cadenhead et al., 2010). Our transition rate of 22% is comparable to the 29% transition rate identified in a meta-analysis done by Fusar-Poli et al. (2012). Overall, our cohort is similar in profile and risk to those found in high-income countries. In our small cohort, baseline symptom severity does not predict transition to psychosis, likely due to insufficient power. We expect that as our cohort increases in size over time, identified predictors of psychosis onset in other cohorts, such as some positive (unusual thought content and suspiciousness) and negative (anhedonia, asociality) symptoms (Cannon et al., 2016; Fusar-Poli et al., 2013; Schmidt et al., 2017), will also have prognostic value in our cohort. Sample will show similar results.

Our program is in its early stages, such that we are working on improving prevention and care in an iterative fashion. To date, we have focused on standard pharmacological and psychological treatment to target the UHR syndrome and its comorbid diagnoses (Schmidt et al., 2015), combined with treatment of substance abuse and metabolic indices, but we have not yet included the common community-based psychosocial interventions. We are now also

TABLE 3 Baseline clinical symptoms and psychosis outcome

SOPS	Transition UHR to FEP	n	Mean rank	Z	P value	Effect size
Positive	No	21	13.21	−0.98	0.32	0.19
	Yes	6	16.75			
Negative	No	21	13.00	−0.69	0.49	0.13
	Yes	6	15.60			
Disorganized	No	21	12.76	−1.02	0.31	0.20
	Yes	6	16.60			
General	No	21	13.26	−0.33	0.74	0.06
	Yes	6	14.50			

Abbreviations: FEP, first episode of psychosis; SOPS, Scale of Psychosis-Risk Symptoms; UHR, ultra-high risk. Mann-Whitney U test. Confidence level 95%. Sig. 2-tailed.

developing community-based education and greater access to service, including home-based assessment and clinical hours outside of typical work hours, as recommended by McGorry (2015). As we acquire more resources, we will include individual case managers to organize support, develop family programs and implement rehabilitation strategies for academic and vocational function. Other plans include group programs with peer support, and a formal cardiovascular assessment and treatment program, including a gym for our patients, in order to prevent metabolic complications and improve functioning (Shiers & Curtis, 2014). As new evidence emerges for other preventive intervention strategies, we will incorporate them into our program, considering local cultural factors.

Finally, we have encountered a difficulty in our UHR program that is common to other programs in Latin America, which is the struggle to recruit enough participants to both achieve a social impact proportional to the prevalence of this condition and a sufficiently large sample to make the appropriate statistical analyses. For example, in the Evaluation and Follow-up of Adolescents and Young Adults in São Paulo (ASAS) Program in Brazil, researchers studied a cohort of 18 participants meeting criteria for UHR, out of an initial sample of 894 (Brietzke et al., 2011). In this respect, our data represent a similar contribution, with 27 UHR subjects, which is not yet comparable with other larger cohorts described in the literature, such as the Personal Assessment and Crisis Evaluation (PACE) clinic in Melbourne, Australia ($n = 416$; Mechelli et al., 2017), the European Prediction of Psychosis Study (EPOS, $n = 233$; von Reventlow et al., 2014), the Center of Prevention and Evaluation (COPE), located in New York City ($n = 200$; Brucato et al., 2017) and the NAPLS-2 ($n = 764$; Addington et al., 2015). Therefore, we are working to expand our network of clinical collaborators in Chile and more broadly across South America. Our plan is to continue this initiative and to expand to other regions of Chile and South America, with the intent of building a South American psychosis risk research network.

We hope that in Chile, our initiative will lead to the further financing and universal treatment of UHR individuals as well as SZ patients by the GES.

ACKNOWLEDGEMENTS

R.I.C. is supported by the National Commission for Scientific and Technological Research (CONICYT)—PCHA, Doctorado Nacional, 2015-21150063, Ministry of Education, Chile. P.G. is funded by CONICYT, FONDECYT initiation into research 2014, Grant No. 11140464 and OAIC grant from the Clinical Hospital of the University of Chile. The Biomedical Neuroscience Institute (BNI) and the Millennium Nucleus to Improve the Mental Health of Adolescents and Youths (IMHAY) also support P.G. C.M.C. is supported by RO1 MH107558 02 and the Office of Mental Health in the State of New York, United States.

CONFLICTS OF INTEREST

The authors have no conflicts of interest to report.

ORCID

Pablo A. Gaspar  <https://orcid.org/0000-0002-9682-5327>

REFERENCES

- Addington, J., Liu, L., Buchy, L., Cadenhead, K. S., Cannon, T. D., Cornblatt, B. A., ... McGlashan, T. H. (2015). North American Prodrome longitudinal study (NAPLS 2): The prodromal symptoms. *The Journal of Nervous and Mental Disease*, 203(5), 328–335.
- Addington, J., Piskulic, D., Liu, L., Lockwood, J., Cadenhead, K. S., Cannon, T. D., ... Woods, S. W. (2017). Comorbid diagnoses for youth at clinical high risk of psychosis. *Schizophrenia Research*, 190, 90–95. <https://doi.org/10.1016/j.schres.2017.03.043>
- Brietzke, E., Araripe Neto, A. G., Dias, A., Mansur, R. B., & Bressan, R. A. (2011). Early intervention in psychosis: A map of clinical and research initiatives in Latin America. *Revista Brasileira de Psiquiatria*, 33(Suppl. 2), s213–s224.
- Brucato, G., Masucci, M. D., Arndt, L. Y., Ben-David, S., Colibazzi, T., Corcoran, C. M., ... Girgis, R. R. (2017). Baseline demographics, clinical features and predictors of conversion among 200 individuals in a longitudinal prospective psychosis-risk cohort. *Psychological Medicine*, 47, 1923–1935.
- Cadenhead, K. S., Addington, J., Cannon, T., Cornblatt, B., McGlashan, T., Perkins, D., ... Heinssen, R. (2010). Treatment history in the psychosis prodrome: Characteristics of the north American Prodrome longitudinal study cohort. *Early Intervention in Psychiatry*, 4(3), 220–226.
- Cannon, T. D., Yu, C., Addington, J., Bearden, C. E., Cadenhead, K. S., Cornblatt, B. A., ... Kattan, M. W. (2016). An individualized risk calculator for research in prodromal psychosis. *The American Journal of Psychiatry*, 173, 980–988.
- Carpenter, W. T. (2016). Early detection of psychosis vulnerability: Progress, opportunity, and caution. *The American Journal of Psychiatry*, 173(10), 949–950.
- Corcoran, C., Gerson, R., Sills-Shahar, R., Nickou, C., McGlashan, T., Malaspina, D., & Davidson, L. (2007). Trajectory to a first episode of psychosis: A qualitative research study with families. *Early Intervention in Psychiatry*, 1(4), 308–315.
- Fusar-Poli, P., Bonoldi, I., Yung, A. R., Borgwardt, S., Kempton, M. J., Valmaggia, L., ... McGuire, P. (2012). Predicting psychosis: Meta-analysis of transition outcomes in individuals at high clinical risk. *Archives of General Psychiatry*, 69(3), 220–229.
- Fusar-Poli, P., Borgwardt, S., Bechdolf, A., Addington, J., Riecher-Rössler, A., Schultze-Lutter, F., ... Yung, A. (2013). The psychosis high-risk state: A comprehensive state-of-the-art review. *JAMA Psychiatry*, 70(1), 107–120.
- Hall, R. C. (1995). Global assessment of functioning. A modified scale. *Psychosomatics*, 36(3), 267–275.
- Markkula, N., Alvarado, R., & Minoletti, A. (2011). Adherence to guidelines and treatment compliance in the Chilean national program for first-episode schizophrenia. *Psychiatric Services*, 62(12), 1463–1469.
- McCrone, P. (2010). Cost-effectiveness of an early intervention service for people with psychosis. *The British Journal of Psychiatry*, 196(5), 377–382.
- McGorry, P. D. (2015). Early intervention in psychosis: Obvious, effective, overdue. *The Journal of Nervous and Mental Disease*, 203(5), 310–318.
- Mechelli, A., Lin, A., Wood, S., McGorry, P., Amminger, P., Tognin, S., ... Yung, A. (2017). Using clinical information to make individualized prognostic predictions in people at ultra high-risk for psychosis. *Schizophrenia Research*, 184, 32–38.
- Miller, T. J., McGlashan, T. H., Woods, S. W., Stein, K., Driesen, N., Corcoran, C. M., ... Davidson, L. (1999). Symptom assessment in schizophrenic prodromal states. *The Psychiatric Quarterly*, 70(4), 273–287.
- Ministerio de Salud. (2009). *Guía Clínica para el tratamiento de personas desde primer episodio de esquizofrenia*. Santiago: MINSAL.
- Nasreddine, Z. S., Phillips, N. A., Bédirian, V., Charbonneau, S., Whitehead, V., Collin, I., ... Chertkow, H. (2005). The Montreal cognitive Assessment, MoCA: A brief screening tool for mild cognitive impairment. *Journal of the American Geriatrics Society*, 53(4), 695–699.
- Nuechterlein, K. H., Green, M. F., Kern, R. S., Baade, L. E., Barch, D. M., Cohen, J. D., ... Marder, S. R. (2008). The MATRICS consensus cognitive battery, part 1: Test selection, reliability, and validity. *The American Journal of Psychiatry*, 165(2), 203–213.

- Ruiz-Sancho, A., Calvo, A., Rapado-Castro, M., Moreno, M., Moreno, C., Sanchez-Gutierrez, T., ... Mayoral, M. (2012). PIENSA: Development of an early intervention program for adolescents with early-onset psychosis and their families. *Adolescent Psychiatry, 2*(3), 229–236.
- Schmidt, A., Cappucciati, M., Radua, J., Rutigliano, G., Rocchetti, M., Dell'Osso, L., ... Fusar-Poli, P. (2017). Improving prognostic accuracy in subjects at clinical high risk for psychosis: Systematic review of predictive models and meta-analytical sequential testing simulation. *Schizophrenia Bulletin, 43*(2), 375–388.
- Schmidt, S. J., Schultze-Lutter, F., Schimmelmann, B. G., Maric, N. P., Salokangas, R. K., Riecher-Rossler, A., ... Ruhrmann, S. (2015). EPA guidance on the early intervention in clinical high-risk states of psychoses. *European Psychiatry, 30*(3), 388–404.
- Sheehan, D. V., Sheehan, K. H., Shytle, R. D., Janavs, J., Bannon, Y., Rogers, J. E., ... Wilkinson, B. (2010). Reliability and validity of the Mini international neuropsychiatric interview for children and adolescents (MINI-KID). *The Journal of Clinical Psychiatry, 71*(3), 313–326.
- Shiers, D., & Curtis, J. (2014). Cardiometabolic health in young people with psychosis. *Lancet Psychiatry, 1*(7), 492–494.
- von Reventlow, H. G., Krüger-Özgürdal, S., Ruhrmann, S., Schultze-Lutter, F., Heinz, A., Patterson, P., ... Juckel, G. (2014). Pathways to care in subjects at high risk for psychotic disorders – A European perspective. *Schizophrenia Research, 152*(2–3), 400–407.
- Yung, A. R., & McGorry, P. D. (1996). The prodromal phase of first-episode psychosis: Past and current conceptualizations. *Schizophrenia Bulletin, 22*(2), 353–370.

How to cite this article: Gaspar PA, Castillo RI, Maturana A, et al. Early psychosis detection program in Chile: A first step for the South American challenge in psychosis research. *Early Intervention in Psychiatry*. 2018;1–7. <https://doi.org/10.1111/eip.12766>